

Robust E-frame

Ergonomic operation

High energy efficiency due to electrical connection (GTE 312)

Clean and fast lifting with electro-hydraulic lift

High level of directional stability due to central axle



GTE 106/212/312

Trailer (600/1,200 kg)

Our E-frame trailers guarantee the flexible, economical transporting of loads of up to 1200 kg weight per trailer. These can be connected as required so that loading and unloading can be guaranteed on both sides. The central axle ensures optimum directional stability even with long trains and in confined spaces.

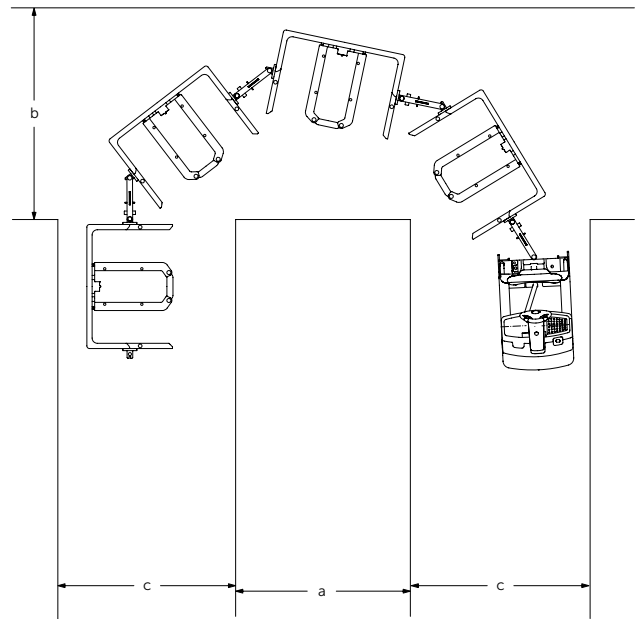
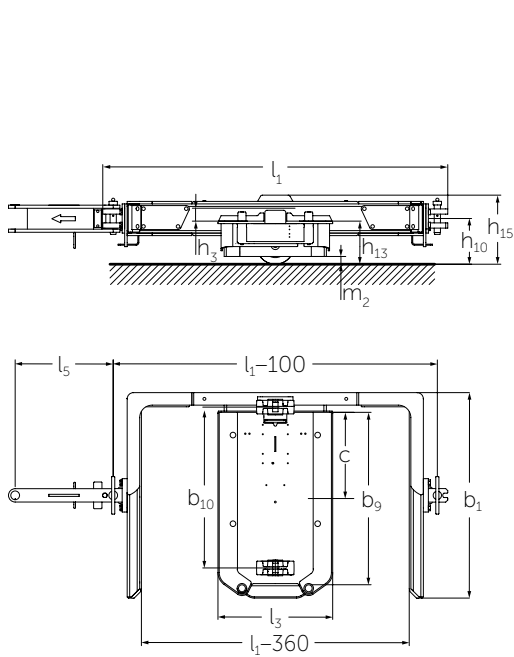
The simple, ergonomic loading of the trolleys into the trailers can be done mechanically (GTE 106), via hydraulic lift (GTE 212) or via electrohydraulic lift (GTE 312). When loading, the load is

pushed into the trailer on a trolley and mechanically locked in place. The lock is simply released for energy-conserving and space-saving unloading.

The electrically connected trailers (GTE 312) offer the best conditions for easy, reliable and clean operation. A high level of energy efficiency is guaranteed by the energy conversion directly in the trailer.

 **JUNGHEINRICH**

GTE 106/212/312



GTE 106/212/312				U-turn		90° curve	
Pallet size [mm]	Number of trailers	Length without tow tractor [mm]	a [mm] (without countertraffic, EZS 350)	Smallest turning circle 2xW	b [mm] (without countertraffic, EZS 350)	c [mm] (EZS 350)	b [mm] (without countertraffic, EZS 350)
800	2	4028	2000	3800	2500	2000	2200
800	3	6017	2000	4300	2800	2000	2500
800	4	8006	2000	4500	3100	2000	2800
1000	2	4228	2200	4000	2500	2000	2200
1000	3	6317	2200	4500	2900	2000	2600
1000	4	8406	2200	4700	3300	2000	2900

Technical data

Identification	1.1	Manufacturer (abbreviation)		Jungheinrich					
	1.2	Model		GTE 106	GTE 106	GTE 212	GTE 212	GTE 312	GTE 312
				1200 x 800	1200 x 1000	1200 x 800	1200 x 1000	1200 x 800	1200 x 1000
	1.5	Load capacity/rated load	Q t	0.6	0.6	1.2	1.2	1.2	1.2
	1.6	Load centre distance	c mm	405	505	405	505	405	505
	1.7	Rated drawbar pull	F N	1,400 ¹⁾					
Weights	2.1	Net weight	kg	195	220	250	283	263	296
	2.2	Axle loading, laden front/rear	kg	795	820	1,450	1,483	1,463	1,496
	2.3	Axle loading, unladen front/rear	kg	195	220	250	283	263	296
Wheels / frame	3.1	Tyres		Vu					
	3.2	Tyre size, front	mm	Ø 180x65					
	3.5	Wheels, number front/rear (x = driven wheels)		2 / -					
	3.6	Tread width, front	b ₁₀ mm	770	970	770	970	770	970
Basic dimensions	4.2.1	Total height	h ₁₅ mm	309	309	346	346	346	346
	4.4	Lift	h ₃ mm	20	20	62	62	62	62
	4.12	Coupling height	h ₁₀ mm	219					
	4.15	Height, lowered	h ₁₃ mm	221	221	208	208	208	208
	4.17	Overhang length	l ₅ mm	470	570	470	570	470	570
	4.18	Loading area width	b ₉ mm	810	1,010	810	1,010	810	1,010
	4.19	Overall length	l ₁ mm	1,619					
	4.21	Overall width	b ₁ /b ₂ mm	985	1,185	985	1,185	985	1,185
	4.32	Ground clearance, centre of wheelbase	m ₂ mm	37					
	4.38.12	Platform length	l ₃ mm	590	590	550	550	550	550
Performance data	5.1	Travel speed, laden/unladen	km/h	8.5 / 18 ²⁾					
	5.2	Lift speed, laden/unladen	m/s			0.03 / 0.03	0.03 / 0.03	0.03 / 0.03	0.03 / 0.03
	5.3	Lowering speed, laden/unladen	m/s			0.03 / 0.03	0.03 / 0.03	0.03 / 0.03	0.03 / 0.03
	5.7	Gradeability, laden/unladen	%	10 / 10					
	5.10	Service brake		none					
Elec- trics	6.2	Lift motor	W					560	560
	6.4	Battery voltage/nominal capacity K5	V/Ah					24 / 0	24 / 0
Misc.	8.5	Trailer coupling, model/type DIN		GTE tiller					

¹⁾ A maximum of 4 trailers are recommended per train.

²⁾ Maximum permissible speed for trailers. Actual speed is dependent on load and tow tractor.

In accordance with VDI Guideline 2198, this data sheet provides details of the standard truck only. Non-standard tyres, different masts, optional equipment, etc. may result in different values.

Benefit from the advantages



Electrical connection for trailers (GTE 312)



Unlocking with the foot clamp



Rear loading of trolleys is easy with an EFG



Mechanical system GTE 106

Electrical connection for trailers (GTE 312)

- High efficiency levels with excellent energy management.
- Fast, quiet lifting and lowering.
- Easy and clean connection.
- Easy separation via an electrical connector.
- No additional power unit required in the tow tractor.
- Low energy consumption.

Comfortable and safe operation

- Lifting and lowering of all trailers (GTE 212/312).
- Lifting and lowering of individual trailers (GTE 106, optional on GTE 312).

Optimum ergonomics for efficient work

- Lift status displayed via lights (optional for GTE 312).
- Loading/unloading possible on both sides by recoupling the trailers.
- Rear loading of the trolley possible with an EFG or ETV.
- Simple coupling system for connecting the trailers.

Robust design

- Frame manufactured from high quality steel.
- Suitable for load aids in the sizes 800 x 1200 mm and 1000 x 1200 mm.
- Suitable trolleys also available in these sizes.

GTE 106: mechanical trailer

With its easy, mechanical technique, the GTE 106 offers many advantages:

- The load is lifted free from the ground via rollers inside the trailer and ramps on the trolley.
- Operation without energy from the tow tractor.
- Suitable for loads up to 600 kg.

Reduced costs due to energy-efficient operation (GTE 312)

- Reduced energy consumption due to separate lifting/lowering of individual trailers (optional). Trailers with loads which are not moved remain raised.
- The conversion of the energy directly in the trailer minimises losses and ensures optimum energy utilisation.

Jungheinrich UK Ltd.

Head Office:
Sherbourne House
Sherbourne Drive
Tilbrook
Milton Keynes MK7 8HX
Telephone 01908 363100
Fax 01908 363180

info@jungheinrich.co.uk
www.jungheinrich.co.uk

The German production facilities in Norderstedt, Moosburg and Landsberg are certified. **ISO 9001**
ISO 14001

Jungheinrich fork lift trucks meet European safety requirements.



JUNGHEINRICH